

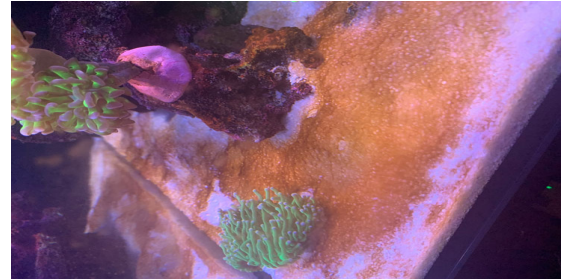


DEFEATING DINOS

WHY DO WE GET DINOFLAGELLATES & HOW DO WE RID THEM FROM OUR REEF TANKS

A complete step-by-step guide from ID to
removing them from our systems

Rev H – Issued August 2023



June 2020

ABSTRACT

"Thanks Jason for all your help from ending my worst nightmare. From being completely clueless to actually starting now to understand how a reef tank is meant to function at a microscopic level, your help with everything has been amazing. Literally there with me at every step which is exactly what I needed. Now I'm armed with the all the knowledge you have passed on, I'm convinced my reefing adventure will successfully continue for many, many years to come."

Written in Conjunction with -
Jason Mack, Steph Chartier, Alistair Logan,
David Martin & Ed Hensley.



Dec 2020

Contents Page

1.0 Overview and What to do if you Think you May Have dinos?	2
2.0 General Introduction and Key Reading	3
3.0 Initial Reefing, Good Practice, and What Can be Done Before Microscope ID	3
4.1 Amphidiniums (large-cell and small-cell) and Prorocentrum	5
4.2 Ostreopsis & Coolia	6
4.3 Chrysophytes	7
4.4 Diatoms	8
4.5 Cyano	9
4.6 Euglena	10
5.0 Microscopes	10
6.0 Water Testing & Recommended Testing Kits	11
7.0 ICP Testing	12
8.0 Recommended Water Parameters	13
9.0 Methods for raising Nitrate and Phosphate Levels	14
9.1 Nitrates	15
9.2 Phosphates	16
10.0 Activated Carbon	16
11.0 Dosing Bacteria	17
12.0 Dosing Phytoplankton / Zooplankton	18
13.0 Dosing Copepods	19
14.0 Live Rock vs Artificial Rock / Dry Rock	21
15.0 UV, Placement & Flow Rates	22
16.0 Dosing Waterglass / Seahorse Breeder Silicates	23
17.0 Hydrogen Peroxide (H2O2 Dosing)	24
18.0 Cleaning of the Rockwork / Sandbed	25
18.1 Cleaning of the Sandbed	25
18.2 Cleaning of the Rockwork	25
19.0 Blackouts	26
20.0 Dino-X Dosing	26
21.0 Completing Water Changes	26
22.0 Removal of the Sand Bed	27
23.0 Future updates / Areas of further exploration	28

1.0 Overview and What to do if you Think you May Have dinos?

First of all, join us on Facebook. There is a group called “Mack’s reef... Dinoflagellates support” group. Post microscope images for help with IDs and general updates. And most importantly, tell us all when you have finally beat them. We all love to see those posts.

Dinos occur when the right conditions favour them. Usually this is in tanks where nitrates (NO₃) and phosphates (PO₄) have been at 0 or there is an imbalance where one or the other has been at 0 for a period of time. This creates an environment in which dinoflagellates thrive and, unfortunately, our desired microbiology doesn’t. This ultimately causes it to die off, allowing dinos to dominate without any other organisms to compete with them. So yes, you guessed it: We need to build up our microfauna within the system to beat them back again.

Certain trace elements (halogens and metals), when in balance, help inhibit the growth of fast-growing algae (like hair algae), bacteria (cyano), dinos, and pathogens. These elements include iodine, zinc, nickel, boron, bromine, molybdenum, and vanadium. When these are out of balance, either lacking or overdosed, we start to see issues with reef systems. This is where ICP laboratory testing comes into play as it gives us a peek under the hood, so to speak.

High or low levels or imbalances between trace elements / pollutants are generally underlying problems. They are not proven to be the cause of dinos becoming dominant, but there are discussions it helps keep them dominant in systems. Always remember that 0 nutrients are generally the trigger, so keep those NO₃ and PO₄ levels above 0.

If you have found this guide useful and it’s helped you in your battle of defeating dinos when nothing else has worked, we do accept donations with a twist: We have decided that ALL donations that are made will be used to fund giveaways on the macks reef dinos support group.

YES, you heard that right, We are giving it all right back to you guys.

The below link can be used to donate.

www.Paypal.me/jmack15

2.0 General Introduction and Key Reading

One thing you should always do as a reefer is do your own research on what you're putting into your tank. Try and get an understanding of what its purpose is and what the positives and also negatives can be. Don't just do it because someone on Facebook told you it worked for them. Chemicals should be dosed into the system to fix an issue as a last resort only. If you don't resolve the underlying issue, it will just come back and usually with a bang the 2nd time around. Every tank is different and what works for one tank may not work on another.

You will read time and time again in this document that you should make any changes within the tank SLOWLY. Nothing good happens fast in a reef tank, so make sure any corrections are made steadily and slowly or you risk a sudden swing in parameters. Reefs, corals, and fish do not like sudden changes. Think to yourself what happens in the oceans when there is a sudden swing. I can tell you that it's nothing good.

Any sudden changes can have a major impact and cause the system to crash, so always remember slow and steady. Patience is key in this hobby or you will learn this the hard way. Always try natural approaches first. If these don't work, then consider another approach. You will not see instant changes using natural approaches, so be patient. If you're not a patient person, then I'm sorry to say this hobby is probably not for you.

It's taken a while for your tank to get into this position, so it may take a while for you to get out of it. With some dino types, we can see successes in as little as a week. With other types it can take months. But the good news is you can beat them.

Finally, the information contained within this document is a guide only and, as above, we EXPECT you to do your own research. Honestly, we would be offended if you didn't. As always, if you have any questions on any element of what's detailed below, please ask.

3.0 Initial Reefing, Good Practice, and What Can be Done Before Microscope ID

The following can be implemented and is generally good practice on reef tanks:

Allowing for the ID of the type of dino using a microscope. (Further information on this is below. The current list can be completed before an ID has been confirmed.) Without an ID, it's all just guesswork.

1. Correcting NO₃ and PO₄: We generally advise to keep nitrate within 1/100th of phosphate. So for example, if nitrates are 10ppm, then phosphates should be around 0.10ppm. This doesn't have to be exact, just within 20%. When you have a large % difference between the two, this is where we will see issues with Cyano. Interestingly, Cyanobacteria can fill the void to help outcompete the Dinosaurs. Because nutrients are imbalanced, cyanobacteria will usually be present. Hold off on treating cyanobacteria till after Dinosaurs are receding. We would generally advise the below levels for the main reef tank systems:
 - **Mixed Reef System**
 - NO₃ - 5-10ppm
 - PO₄ - 0.05-0.1ppm (preferably around 0.1 for po₄)
 - There is a section within this document specifically addressing the raising of NO₃ and PO₄ levels, so please refer to this for tips on getting them within the recommended parameters.
 - **SPS Dominant System**
 - NO₃ - 3 – 5 ppm
 - PO₄ - 0.03 - 0.05 ppm (preferably around 0.05 for po₄)

- There is a section within this document specifically addressing the raising of NO₃ and PO₄ levels, so please refer to this for tips on getting them within the recommended parameters.
 - We would recommend that the mixed reef parameters are implemented as these give you a bit of a buffer if the levels start to drop.
 - If the above SPS dominant levels are adopted, we would recommend that you ensure you test daily using accurate test kits with minimal +/- accuracy variances to ensure you don't bottom out your parameters. There are many many successful SPS systems that run No₃ and Po₄ at the mixed reef levels and sometimes above this.
2. Reduce (don't stop) any carbon dosing (eg. Nopox, vodka, vinegar) as this can feed dinos, also if you stop carbon dosing suddenly this can result in a large die-off of bacteria which will adversely affect the system. If you are dosing products such as amino acids or Red Sea AB+, we suggest stopping this as it can cause the dinos to explode in many systems. It should be noted that AB+, in our experience, does not cause dinos but will 100% feed them. The stuff is like rocket fuel.
 3. Support / boost the microbiology of your tank by dosing live phytoplankton and copepods. Adding bacteria will also help. All these organisms help battle all the nasties at a microscopic level.
 4. Reducing your lighting schedule for a peak time of 5-6 hrs max. Reduce whites, greens, and reds while running more blues.
 5. Broadcast dosing hydrogen peroxide (H₂O₂). More info on this below within section 17.
 6. Add some activated carbon into a high flow area within your sump or in a reactor to help remove some of the toxins dinos let off. (Some types are extremely toxic.)
 7. Lots of systems nowadays are started by using artificial dry rock. Add a decent piece of live rock into the system (into the sump is fine). This will help boost your system with some healthy and mature bacteria and other beneficial organisms.
 8. If you don't already start looking into making your own RODI water for auto top up and for salt water mixing, our experience is on every level you should know that what you're putting into your tank is clean and not full of contaminants. if you have your own 4 stage RODI make sure you change out the filters as soon as the TDS goes above 0 and also the DI resin.
 9. If you are dosing aminos into the tank, we would recommend that this is halted for the time being. Coral foods like Reef Roids are marine planktons and okay to use, just be careful not to overuse.
 10. Avoid supplements and salt mixes that are known to add iron to the system. These can also fuel dinos as well.

All of the above can be done before you've had an ID on which type of dinos you have, and we recommend adopting the majority of the above as it will help keep your reef tank nice and healthy.÷

4.0 Types of Dinos & Methods for Removal

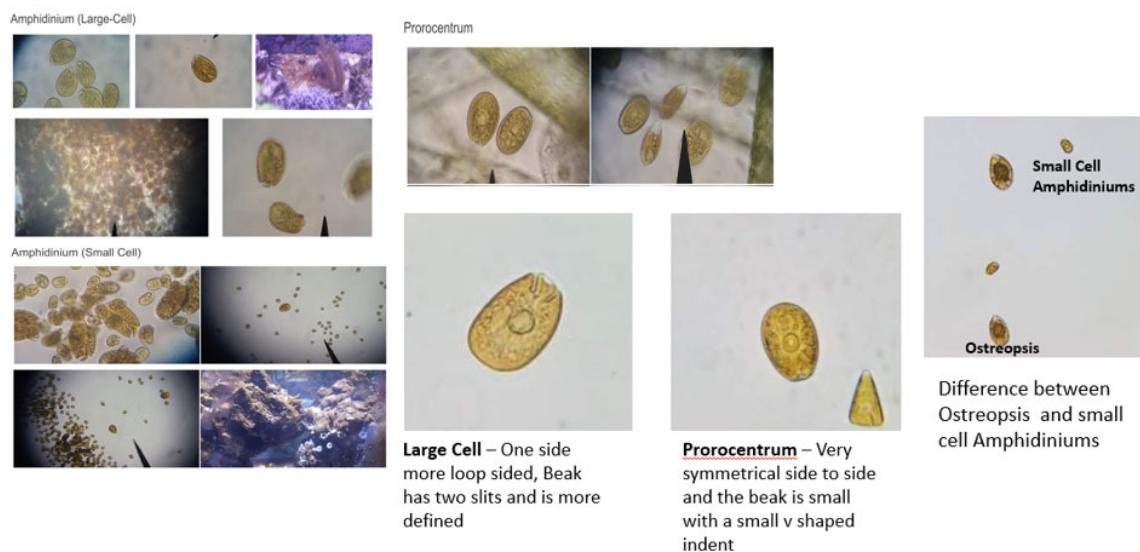
The full dinos fact / crib sheets can be found at the rear of this document.

4.1 Amphidiniums (large-cell and small-cell) and Prorocentrum

These are the most difficult types of dinos to remove from systems once they're in there. Generally these types of dinos, unlike *Ostreopsis* and *Coolia*, go into the sand bed / rocks at night, so UV has very little effect against them. Dealing with these can be a long and drawn out process. But just remember they didn't become the dominant species in your tank overnight, so it's going to take a while to build your microbiology to outcompete them again

For the above types, we recommend all of what has been explained above along with dosing waterglass / sodium silicate. This is to introduce a diatom bloom to outcompete the dinos. So basically we're going to need to overdose silicates (SI) to achieve this. More detailed information is contained below on silicate dosing along with recommended dosing amounts / methods.

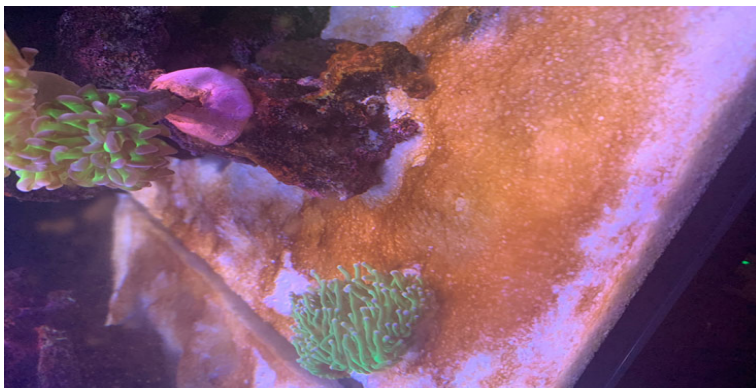
Silicates are used up fast in a reef tank, so the majority of what you had today will be gone tomorrow, but every tank's silicate consumption is different. For instance, sponges feed off SI, so if you have a lot of sponges, it will take more to get the level up. The rockwork will also absorb some silicates. We also recommend taking samples from various places within the tank weekly to view under the microscope. Over the course of treatment, you should see an increase in diatoms and a decrease in dinos. Below are a few snapshots of *Prorocentrum*, small-cell *Amphidiniums*, and large-cell *Amphidiniums*.



Amphidiniums (Large and small cell) to the naked eye within the tank are not mats but more of a dusting on the sandbed.



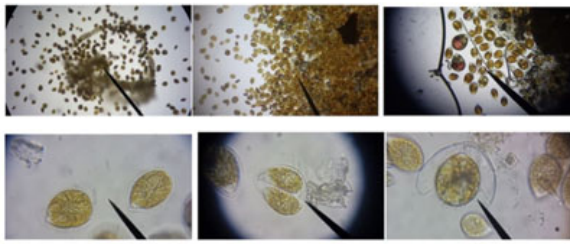
Prorocentrum to the naked eye tend to create a kind of thick mat on the sand or lower rocks only.



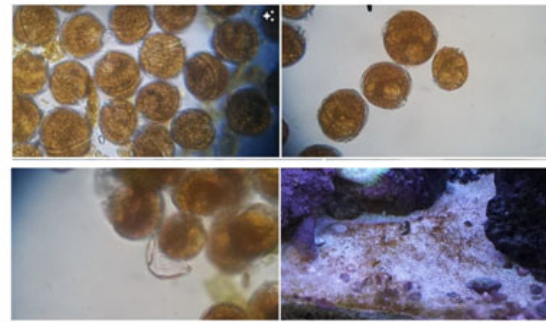
4.2 Ostreopsis & Coolia

Generally we find that dealing with Ostreopsis and Coolia can be quicker than with Amphidiniums / Prorocentrum; however, it's not always straightforward. This is due to these types going into the water column after the lights have been out. This makes them more susceptible to being "removed" by a high quality, oversized UV unit (please see UV section for placement and flow rate requirements). Ostreopsis specifically are the most toxic kind of dinos, and it is recommended to introduce activated carbon into your tank ASAP and not to add any additional cleanup crew. The dinos will ultimately kill anything that eats them. (More information about activated carbon is available further on within this document.) In regards to toxicity, please ensure you wash your hands thoroughly if they have been in the tank. Generally we find that if the above pre-ID process is completed and maintained in conjunction with running a high quality, oversized UV on your system, these will normally clear up within one to two weeks; however, we all know every tank's different. But in our experience, this is the best option for removing these types from reef tanks.

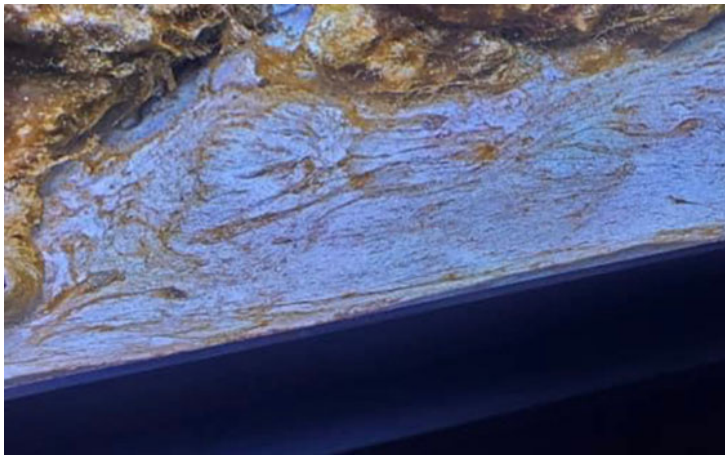
Ostreopsis



Coolia



Ostreopsis to the naked eye are long strands and found everywhere in the tank on glass ,rocks and corals .



Coolia to the naked eye are short strands and only found usually on the sand bed.



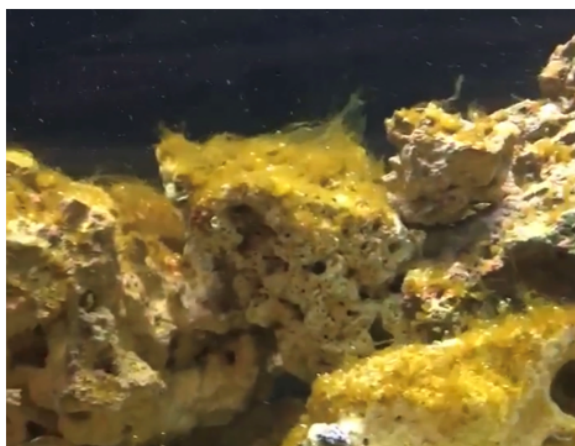
4.3 Chrysophytes

Chrysophytes are also called the ‘golden algae’ as the algae tends to show as a golden colour to the naked eye in the system, although these are not classed as a dinoflagellate they are often mistaken as them. Chrysophytes tend to show up when there are excess silicates present in the system, if you are not dosing silicates into your system then the source of input must be found and stopped. The first step in correcting the issue is to cut off the input source of silicates into the system, generally

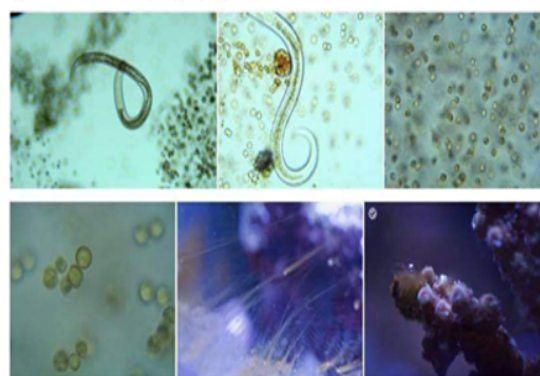
silicates are inputted into the system via RODI water (top up water). It's very common for you to still have 0 tds and the DI resin to be depleted. One of the first things that is leached back when the DI resin is depleted is silicates. Silicates don't register on the TDS, so this may very well show 0. We have tested this scenario via an ICP test on the RODI water. TDS reading 0, DI exhausted, silicates read high. Our advice is to make sure you use the colour changing DI resin and to change that out as necessary rather than depending on the tds reading completely.

If your RODI water is sourced from a LFS or another source, we would advise you to invest in an RODI unit as we should always be aware exactly what we are putting into our tanks.

Once the source has been found and cut off this should slow the issue, however what we're going to have to do now is basically scrub the rockwork and help remove the Chrysophytes ideally this would be done by removing the rockwork from the tank scrubbing it then returning it back to the tank.



Symbiodinium-like (Chrysophyte?)



4.4 Diatoms

Below are a few images of what Diatoms look like under the microscope. To be clear these are not dinos but included so the user can tell the difference between dinos and diatoms. They can look very, very similar in appearance in the tank. While dosing silicates, as explained above, you should start to see an increase in diatoms and a decrease in dinos. Also, as you start to increase your nitrate and phosphate levels, adding copepods, etc., you will see an increase in other organisms within the sand bed / rockwork. There are far too many different types of organisms to try and mention them all here, but this is positive as it's showing an increase in your system's microbiology and will help out complete the dinos.

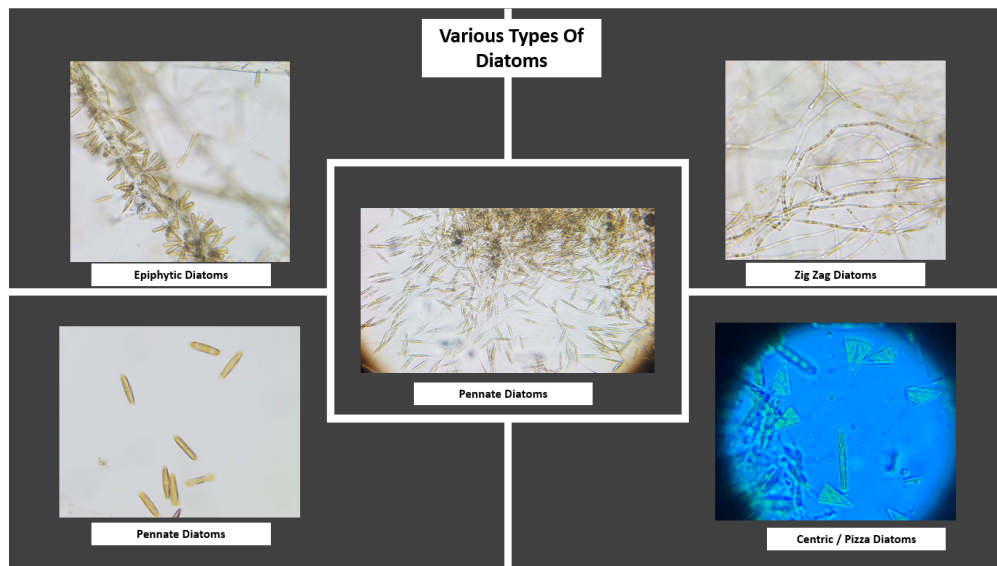
However, as explained above diatoms and dinos can look very similar to the naked eye. This seems to be a very common issue where people "think" they had dinos and they will advise they cleared them by doing x, y and z. However if they didn't put a sample under a microscope their issue could have just been a diatom bloom in the tank.

Once you have put a sample under a microscope and confirmed you have a diatom bloom in your tank and not dinos. The first step in correcting the issue is to cut off the input source of silicates into the system, generally silicates are inputted into the system via RODI water (top up water). It's very common for you to still have 0 tds and the DI resin to be depleted. One of the first things that is leached back when the DI resin is depleted is silicates. Silicates don't register on the TDS, so this may very well show 0. We have tested this scenario via an ICP test on the RODI water. TDS reading

0, DI exhausted, silicates read high. Our advice is to make sure you use the colour changing DI resin and to change that out as necessary rather than depending on the tds reading completely.

Once the source of silicates is removed from the system the diatoms over time will consume the remaining silicates and burn themselves out, you can syphon the sandbed to speed up the removal.

It should also be noted that diatoms are very, very common in new systems. This is due to silicates being present in new sand and rocks. Our advice is simple: Just leave them be and they will burn themselves out over time.



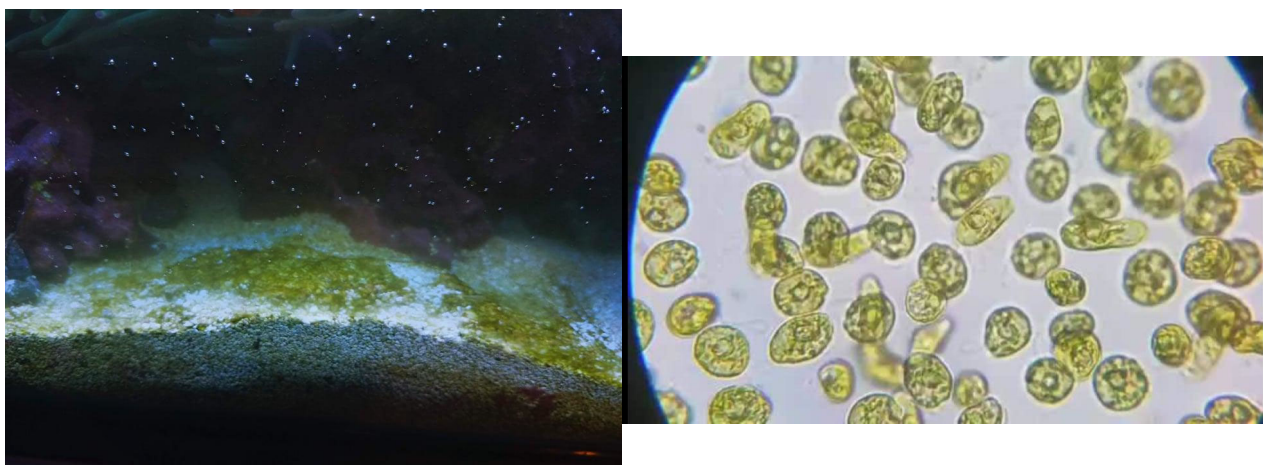
4.5 Cyano

Cyano, to the naked eye, forms a red matt / blanket on the sandbed. Under the microscope, it looks like thin strands. In the majority of instances, Cyano is caused by an imbalance in nitrates and phosphates. Generally the way to resolve issues with Cyano is to get your nitrates and phosphates back in balance. When we start resolving issues with dinos and we resolve issues with either 0 nitrates and/or 0 phosphate, getting cyano is completely normal and actually a good thing as they will help to out-complete the dinos within the system. If your issue is just cyano, then the key here is to get nitrate and phosphate back in line with each other. We generally advise to keep nitrate within 1/100th of phosphate. So for example, if nitrates are 10ppm, then phosphates should be around 0.10ppm. This doesn't have to be exact, just within 20%. When you have a large % difference between the two, this is where we will see issues with Cyano. Just remember it's taken time for cyano to form within the system, so it's going to take time for the balance to be restored. Always use chemicals such as chemi-clean as a last resort, not a first point of call.



4.6 Euglena

Euglena is a single cell flagellate which we have been seeing more commonly in people's tanks. At first glance, it can appear to be a green Cyano due to its matted appearance with air bubbles. They most often appear on the sand and/or glass. There's not a ton of information available as to why they show up or how to get rid of them, but fortunately, they appear to be harmless and nontoxic for almost everybody. There has been success in eliminating them by dosing silicates the same way in which you would for amphidinium dinos.



5.0 Microscopes

This piece of equipment is key to helping us help you beat the nasty brown algae in your tank. Without an ID, it's just guesswork. Could it be dinos?? Could it be diatoms?? Could it be chrysophytes? They all look very similar to the eye but different under a microscope. Even if we know for sure that it's dinos, different methods have to be adopted to beat certain types of dinos. So to help us help you, please ensure you get a microscope so we can help you ID them and beat the buggers. If not, then it's all just guessing.

I'm sure you have seen many, many posts about "I had dinos and I beat them by doing X, Y, and Z." The issue is that they never ID'ed what was in their tank, so it was more than likely NOT dinos and potentially diatoms or maybe cyano.

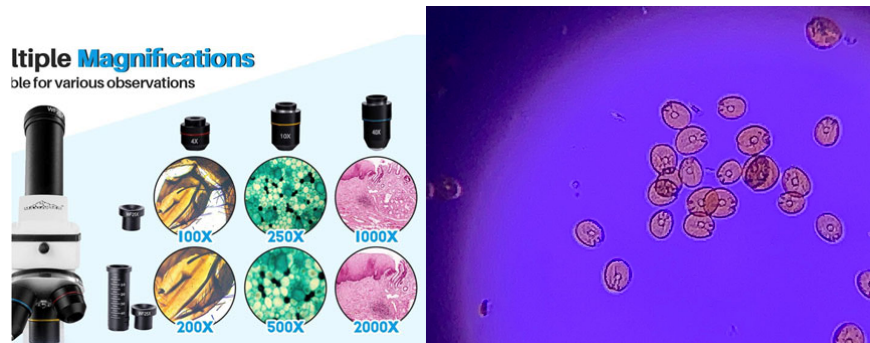
For a microscope, the minimum recommended magnification is 400x. **Don't get the electronic kind** as these won't give you the magnification required. As with everything in this hobby, you get what you pay for. A traditional microscope works much better for what we need. The ones with a phone holder will also help with images and videos to help us ID them for you.

To get the 400x magnification, you will need a 40x lens + 10x eyepiece. This will help you get images like below. It's key we are able to see the cell structure so that we can make an accurate ID or, again, we're just guessing. A video of them is also good because different dinos move in different ways (e.g. *Ostreopsis* generally spin in circles on their own axis).

If you live in Holland or Belgium and don't want to buy a microscope, you can contact Jason Mack and send him a sample. If you're within the UK, then you can contact Alistair Logan to send a sample.

I will say that it will be more beneficial for you to get your own microscope because we recommend taking regular samples and viewing them under the microscope. Over a period of time you should see a reduction in the amount of dinos and an increase in other organisms such as diatoms.

To collect a sample it's as simple as scooping up some of the algae from your tank and either putting it in a glass testing vial (giving it a good shake) then putting some of the sample on a slide or putting some of the sample directly from the tank onto a slide and viewing this under the microscope. If the organisms on the slide are tightly packed or overlapping, the slide is likely too dense for adequate ID. Repeat the sample with a little more tank water and be sure to shake it thoroughly to break any matting visible to the naked eye



6.0 Water Testing & Recommended Testing Kits

Testing, testing, testing. Generally the main cause of dinos is when we bottom out nitrates and phosphates; however, it's not unknown for them to take over with extremely high levels.

It's crucial that we test and understand all parameters on a minimum of a weekly basis. If you have low nitrates and phosphates and you are dosing solutions to raise these, I would suggest testing these either daily or every other day. Once the required level has been hit, stop dosing, but continue testing so you can pick up when the levels start to drop again.

We would recommend the following test kits due to better accuracy:

Nitrate – Salifert / Red Sea / Hanna checker HR

Would not recommend Nyos. There are instances of it sometimes reading falsely low, and overtime they are easily contaminated and will read inaccurately.

Phosphate – Hanna checker (phosphate ULR or phosphorus) / Red Sea Pro / Salifert

***** If you're dosing silicates, it's been known for the Hanna ULR checker results to be falsely elevated due to interference with the silicate levels in the tank. If dosing silicates, it's recommended NOT to use the hanna checker to monitor phosphates. The Red Sea and Salifert test results do not appear to be affected by the tank's silicate levels. *****

Alkalinity – Hanna checker (DKH or PPM checker) / Red Sea / Salifert

Calcium – Red Sea / Salifert

Magnesium – Salifert

Silicate – Columbia or Seachem. We tend to find accuracy of these are very hit and miss. Regular ICP tests will give you a much more accurate view of silicate levels

For us, testing is the most important part of owning a reef aquarium and accuracy is literally everything when it comes to this. At some point (probably now) you are going to react to those test results, whether that be dosing products to raise nitrates / phosphates or dosing to raise your alkalinity, calcium, and magnesium. Confidence that these results are accurate is going to be key to your success.

If a result comes back showing something that is out of the ordinary, re-test because it may be user error or *a defective batch if using say hanna sachets*.

It's completely understandable that this hobby is expensive enough; however, as I've mentioned above, the accuracy of your test kits can be the difference between success and failure in this hobby, so don't let yourself down by investing in testing kits that aren't accurate. Bulk Reef Supply (BRS) has done some amazing videos on test kits, looking at each parameter, so give these a watch before making your mind up.

Trace element testing

Any hobby grade test kits for trace elements, in our experience, is **NOT ACCURATE**. Our advice would be to **NEVER** blind dose trace elements into your system because you just don't know if what you're dosing is elevating those levels too high. You're just dropping them in your tank and hoping it will be okay. One method to accurately (as accurately as you can) get a view of trace elements is sending in an ICP test.

7.0 ICP Testing

There is lots of evidence that points to a relation of a lack or imbalance of certain trace elements (halogens/metals) and dinos. It really is worth having an ICP test completed as it gives you a detailed peek under the hood of your tank. As stated in the previous section, hobby-grade test kits for trace elements are not accurate, so please don't blindly dose these or rely on home test kits for these. For example, on a specific tank they were dosing a drop of lugol's iodine into the tank and testing daily. The level always came back at 0 with a hobby-grade test kit. An ICP test was done. See below.

Iodine	539.6	60.67	478.9
--------	-------	-------	-------

Luckily there was no ill effect on any of the corals or fish within the system, but as you can see, the level is nearly 10 times higher than natural sea water levels.

For many people, Iodine, Fluorine, Bromine, Boron, Molybdenum, Strontium, Vanadium, and Zinc seem to be lacking, especially in tanks that have dinos present. These elements have been shown to inhibit the growth of fast-growing algae (hair algae, etc.), dinos, and bacteria (cyano) pathogens. But please be aware that too-high levels of these elements can also promote the growth of the aforementioned organisms.

Fluorine, Bromine, Boron, Molybdenum, Strontium, and Zinc are elements that can be dosed and corrected to their ideal levels (if they are low) and are relatively stable for a time, although may need to be dosed monthly in order to keep their levels up.

Iodine and Vanadium are slightly more tricky. They are used up much more quickly for most tanks, and many people may need to dose them weekly or more to keep them up.

Also keep in mind that granulated carbon can/will remove certain trace elements efficiently. Many people with dinos need to use carbon to control toxins, but it can lower some of these elements even more (Iodine in particular).

There are various ICP tests available such as ATI, Oceamo, Fauna Marin. What becomes a major benefit, and also an expensive one, is that you can dose individual trace elements to raise their levels; however, every brand's trace elements will differ in concentrations from each other, so please keep that in mind when dosing. So, for example, if you have an ATI ICP completed and their "help / dosing" guidelines try to raise a specific trace element, if you use a Triton trace element, you're either going to be adding too much or too little due to differences in concentrations. If you buy trace elements brands that differ from your ICP brand, consider using the spreadsheet as mentioned below.

Kourtney Roberts has very kindly created an Excel spreadsheet that will allow you to input specifics on your tank (volume), ICP results, baseline, and target levels (safe range of levels are also shown). You can then select specific trace element brands to enable you to dose these as some will be more cost effective than others due to them being a higher concentration. The sheet will then advise on corrections required. This sheet can be found within the Mack Reef Dino group. Go to the files section and you will see it there. It's titled "Tank supplement dosage calculator".

Fauna Marin has created the below portal to help people start to expand their knowledge of trace elements and how they link together. It is, I must say, an amazing piece of work. It explains each individual element's purpose very well.

<https://www.faunamarin.de/en/knowledge-base/>

Chemical elements

H																	He																		
Wasserstoff																	Helium																		
Li																	B		C		N		O		F		Ne								
Lithium																	Boron		Carbon		Nitrogen		Oxygen		Fluor		Neon								
Na																	Al		Si		P		S		Cl		Ar								
Natrium																	Aluminium		Silicium		Phosphorus		Sulfur		Chloride		Argon								
K		Ca		Sc		Ti		V		Cr		Mn		Fe		Co		Ni		Cu		Zn		Ga		Ge		As		Se		Br		Kr	
Potassium		Calcium		Scandium		Titanium		Vanadium		Chromium		Manganese		Iron		Cobalt		Nickel		Copper		Tin		Gallium		Germanium		Arsenic		Selenium		Bromine		Krypton	
Rb		Sr		Y		Zr		Nb		Mo		Tc		Ru		Rh		Pd		Ag		Cd		In		Sn		Sb		Te		I		Xe	
Rubidium		Strontium		Yttrium		Zirconium		Niob		Molybdenum		Technetium		Ruthenium		Rhodium		Palladium		Silver		Cadmium		Indium		Zinn		Antimony		Tellur		Iodine		Xenon	
Cs		Ba		La		Hf		Ta		W		Re		Os		Ir		Pt		Au		Hg		Tl		Pb		Bi		Po		At		Rn	
Cesium		Barium		Lanthanum		Hafnium		Tantal		Tungsten		Rhenium		Osmium		Iridium		Platin		Gold		Quecksilber		Thallium		Lead		Bismut		Polonium		Astat		Radon	

For those who are more interested in starting or following a trace elements program, it is highly recommended to look into the Reef Moonshiner's program. Following it appropriately can decrease the likelihood of dinos and other nuisance algae, while greatly improving color, growth, and health of all corals.

The program's handbook is free and available for download here:

<https://www.reefmoonshiners.com/handbook-tools>

8.0 Recommended Water Parameters

With regard to the recommended levels for nitrates and phosphates, we recommend the below levels. It should also be noted that 0 nitrate and 0 phosphate is not good for any reef aquarium. All life within the tank, including corals, depend on a certain level of nitrates and phosphates to survive.

- Recommended levels - mixed reef:
 - Nitrates – 5ppm to 10ppm

- Phosphates – 0.05ppm to 0.1ppm
- Recommended levels - SPS dominant:
 - Nitrates – 2ppm to 5ppm
 - Phosphates – 0.02ppm to 0.05ppm
- So were looking generally for a ratio of:
 - 1/100 NO₃ to PO₄
 - So for every 1ppm of NO₃ we should have 0.01ppm of PO₄
 - For example 10ppm of NO₃ the range were looking for is 0.10 PO₄, again these do not have to be exact we're just looking for them to be within range. If you try and chase these numbers exactly you will no doubt cause yourself to overshoot.
 - Don't chase the exact number too much you're just looking at getting them within range of each other. If you chase the number you will no doubt end up overdosing. For example if your PO₄ is 0.10 and your NO₃ is 8ppm that's okay.
 - If you get major differences in NO₃ and PO₄ this can lead to cyano within the aquarium (see section 20 for more info on dealing with cyano)
- We would recommend that the mixed reef parameters are implemented as these give you a bit of a buffer if the levels start to drop. (The reason for this is that even the most precise hobby tests we have for PO₄ have accuracy ranges around +/- 0.03. I.E., any results around 0.0-0.02 could well be actually zero)
- If the above SPS dominant levels are adopted we would recommend that you ensure you test daily using accurate test kits with minimal +/- accuracy variances to ensure you don't bottom out your parameters, there are many many successful SPS systems that run NO₃ and PO₄ at the mixed reef levels and sometimes above this, stability is the key to success.

Targeting the above levels initially allows for a bit of a buffer. If the levels begin to drop as they are being consumed, they are not going to drop to 0 within 24 – 48 hours, which means if we keep up our routine testing, we will catch them before they hit 0. It's also going to promote other types of algae to grow in the tank, which helps boost your microbiology. Green hair algae (GHA) is also going to help outcompete the dinos.

With regards to the remainder of other parameters to target, we would suggest that ALK, CAL and MAG are maintained as close as possible to the salt mix you're using. In doing so, you're not going to see any mini swings in parameters when doing water changes. If you know the brand of salt you're using, it's easy enough to find the levels of your salt mix online. If you have other levels in mind and you know the salt mix levels. This is okay, but we would suggest not completing any water changes over 20%.

If you have an ICP test completed, the recommended levels within the report will be as close to natural seawater levels as possible. It may say you have high nitrates and phosphates, but you should ignore these for now as we want to get this up. Unless they are excessively high.

Ammonia and nitrite should always be 0. If these start to rise at any time, then water changes will be needed to lower them and additional bacteria should be dosed to help facilitate the conversion from ammonia to nitrite to nitrate.

9.0 Methods for raising Nitrate and Phosphate Levels

There are a number of ways to try and raise your NO₃ and PO₄ levels. Accurate testing of your water parameters is very important and can be achieved at home using specific test kits. There is a section further down within this document where advice is given on which test kits are accurate enough for home testing.

9.1 Nitrates

If your nitrates are low, first of all, we need to understand why, as the nitrification cycle should be providing us with a constant supply of nitrates into our system. So ask yourself the following questions:

- Have I got enough bioload in my system (fish)
- Is my equipment removing any available nitrates from the system
- Am I dosing / using any products that are stripping my system of available nitrates. Always try to understand what the pros and cons are of anything you're using in your tank. (This could well include some bacterial additives and algae removing treatments)
- Have I got enough rock work / bio media in my system to house the required bacterial populations?
- Due to zero nutrients for a prolonged period of time has a large percentage of my bacteria died off? It's good practise to dose bacteria weekly to keep the density at the required levels

Usually by correcting one of the above (e.g. turning skimmer down, adding additional fish if there is a low bioload in your system, dosing bacteria, adding more rock / bio media) it should help raise the nitrates in our system. Please note, with regards to the volume of fish being added, do this slowly. Remember slow and steady. Also add additional bacteria into the system periodically and test ammonia after adding new fish to make sure the bacteria are doing its job. Another option is to feed a little more, which again, will help create waste for the bacteria to convert.

Do not turn your skimmer off just turn it down if your concerned that its removing to many nutrients, the skimmer will be one of the main forms of oxygenation / gas exchange within the system, if you have an accurate lab spec PH monitor and you turn your skimmer of then you will see your PH drop fairly quickly.

If after, say, a week of trying the above we're still getting a 0 reading on our test kits, then it's time to dose some nitrates into the system.

Also to note that nitrates will generally be easier to raise than phosphates. If your phosphate has been zero for a period of time, when first introduced, the rock will absorb the majority of them initially.

A product most people use for dosing nitrates is Brightwell's Neo-Nitro. There are loads of different brands / products on the market, so do your research before picking one. My advice would be to dose 50% of what is recommended on the bottle initially as we don't want a massive swing of. Slow and steady. Dose one day; test the next. If the level is still below the target level, then dose again. **READ & FOLLOW THE INSTRUCTIONS** provided on the bottle at all times. Also, don't forget to give the bottle a good shake before using every time.

It would be best to test nitrates daily or as a minimum every other day initially. If you're dosing nitrates, test the day after dosing. Once you hit your target level, stop dosing. Dose test dose test.

Keep testing. If the level drops, dose a little to boost it back up again. After a while of dosing and testing, you will get a feel for what appropriate amount is to dose. If the level gets too high, then consider a water change to lower. Eventually you and your equipment should become tuned in with waste production / removal, which will allow for more stability.

The calculation for dosing neo-nitro is

- Tank vol (in gallons) x parameter increase x 0.1261 = amount to dose

- Example $48 \times 3 \times 0.1261 = 18.16\text{ml}$
- We would suggest not trying to raise the level by 3ppm per day.

Further information on brightwells neo-nitro can be found here:

<https://www.brightwellaquatics.com/products/neonitrot.php>

9.2 Phosphates

If phosphate levels are at 0, the process should be fairly similar to raising nitrates. Initially, you can try to over feed but this is a very uncontrollable way to raise them as you will see big swings and/or remove anything that is stripping phosphates from the system (e.g. Rowaphos, GFO).

Similar to nitrates, if after a week your test kit is still showing 0, then it's time to dose some phosphates into the system.

Another product by Brightwell is called Neo-Phos. This is what the majority of people use for dosing phosphates. There are loads of different brands / products on the market, though, so do your research before picking one. My advice would be to dose 25% of what is recommended on the bottle in order to prevent a massive swing of phosphates. Slow and steady. Bring the levels up over the course of a week. Dose one day and test the next. If the level is still below the targeted level, then dose again. **READ & FOLLOW THE INSTRUCTIONS.** Don't forget to shake the bottle before using.

It would be best to test phosphates daily or as a minimum every other day initially. If you're dosing phosphates, test daily. Once you hit your target level, stop dosing. Keep testing and if the level drops, dose a little to boost it back up again. If it gets too high, then consider a water change to lower. Eventually you and your equipment should become tuned in with the waste production, which will allow for more stability.

As mentioned within the nitrates section, it can take time to see a rise in phosphates if they have been at 0 for a period of time. This is because once the nutrient is available, everything will scramble to absorb it, from the rockwork to sand to corals. Dose one day, test the next. If there's still no reading, then dose in the morning, again in the afternoon, and test again the following morning.

The calculation for dosing neo-phos is

- Tank vol (in gallons) x parameter increase x = amount to dose
- Example $48 \times 0.03 \times 3.785 = 5.45\text{ml}$

We would suggest not trying to raise level by 0.03ppm per day

Further info on Brightwells neo-phos can be found here:

<https://www.brightwellaquatics.com/products/neophost.php>

10.0 Activated Carbon

As part of the pre-ID section we mention running some activated carbon in your tank or sump. This is due to the majority of dinos being toxic (some more than others *Ostreopsis* & *Proreocentrum*).

Also be sure to soak / rinse out the carbon before putting it into your system as it will release a significant amount of carbon dust / particles that you do not want in your tank.

Rinsing in tap water is okay, but be sure to rinse in RO afterwards before putting it into your tank. Running Carbon will be key before hitting *Ostreopsis* too hard as they are the most toxic dino, especially when they start dying off. Carbon may need to be changed out weekly as it becomes exhausted.

In a bag is okay or in a reactor is even better, just remember that if it's in a reactor, you don't want the carbon to tumble as it will grind together and turn into dust that will then get all over your sump and display. If it's placed in a bag in the sump, make sure it's located in a high flow area and give it a mix up every now and again.

It should also be noted that overusing carbon can have an adverse effect on fish, specifically on tangs, so please ensure you read and follow the instructions. Don't overdose and change it as required. In many cases half the manufacturer's recommended amount of carbon is more appropriate than using the full amount.

Carbon will also absorb specific trace elements from the water column also (alkalinity, zinc, iodine etc)

As an example if you use Red Sea's Activated Carbon they recommend 50 grams per 200 litres of volume, however please check your carbons manufacturers guidance on dosing.

11.0 Dosing Bacteria

Bacteria is constantly consumed by other organisms within the home reef system, and it's a constant battleground for dominance at the microscopic level. It's best to ensure that the right types of bacteria stay dominant in your reef system. We suggest topping up your bacteria on a weekly basis. There are various different types of bacteria on the market from Dr.Tims, ATM Colony that are generally used as part of the initial nitrogen cycle, a good bacterial type is Dr.Tims Eco balance as this product is thought to add good bacteria into the tank and block out the bad. Other types that will be beneficial are:

- Prodbio – biodigest
- Fauna marin – bacto therapy
- Dr. Tims – Eco balance
- Brightwells – Microbacter7

It's also good to add a blend of bacteria into the system as different types have different roles in the marine eco-system (see below link for further reading on this).

The majority of bacteria types cannot be bought in a bottle and can only be introduced by adding live sand / live rock into the aquarium; however, it should be noted this could include good and bad bacteria.

Whichever one you pick, do some research online before making the purchase. Looking specifically at MicroBacter7, it can reduce your nitrates and phosphates. By the end of this document, you will get the gist that testing these parameters for the foreseeable future should almost be completed daily. So before starting to dose certain products that can reduce N03 and P04, it's a good idea to get these levels elevated first.

Dose as per the instructions on the bottle. Before dosing each time, give the bottle a good shake.

The calculation for dosing MicroBacter7 is as follows:

Initial dosing, we would suggest adopting the medium- to High-nutrient Systems, or to seed Biological Filtration in new aquaria method which means dosing daily for 2 weeks (UV and Skimmers off for 4 hours after dosing, also keep an eye on No3 and Po4 levels as MB7 can consume these.

- Tank vol (in gallons) / 25 gallons x 5ml
- $48 / 25 * 5 = 9.6\text{ml}$

Following the initial seeding method we would then recommend adopting the Stable, Low-nutrient Systems method which advises to dose bacteria weekly as part of your general maintenance

- Tank vol (in gallons) / 50 gallons x 5ml
- $48 / 50 * 5 = 4.8\text{ml}$

Further info on Brightwells microbacter7 can be found here

- <https://www.brightwellaquatics.com/products/microbacter7t.php>

Further info on Dr.Tims Eco balance can be found here

- <https://www.drimsaquatics.com/products/eco-balance/>

There are a large variety of bacteria products and also families of bacteria. This is something we are researching currently. For more information on bacteria types, see below:

<http://blog.coralwonders.com/en/bacterias-en-el-acuario-marino/>

The below link is to a video with reefdudes where they have a session with Aquabiomics on one of their DNA Microbiome Reef Tank Tests:

[https://youtu.be/Ve7VletTkys_!!LQFj5H9VdpXYLbJlGkH62cwTVIHgah29gAGV4aaw579zgIDRVOPbQCARwafpl9mZr6rZmbsjT6WWo1o2Aw\\$](https://youtu.be/Ve7VletTkys_!!LQFj5H9VdpXYLbJlGkH62cwTVIHgah29gAGV4aaw579zgIDRVOPbQCARwafpl9mZr6rZmbsjT6WWo1o2Aw$)

12.0 Dosing Phytoplankton / Zooplankton

Dosing Phytoplankton / zooplankton is incredibly important to the aquatic food chain within our tanks. They utilize nutrients in the water along with carbon dioxide to reproduce and, in the process, create essential fatty acids (EFAs) critical to the health and development of most marine organisms. Dosing a highly concentrated batch of live phytoplankton is only going to benefit your tank.

Phytoplankton utilize nitrates, phosphates, iron, and other trace elements to produce proteins and essential fatty acids. The phytoplankton, in turn, are consumed by filter feeders and aquatic bugs like copepods, rotifers, etc., which pass these essential fatty acids on to fish and corals that manage to grab them.

Many of the aquatic bugs generally eat detritus, thereby keeping the tank cleaner naturally. Live phytoplankton are used in aquaculture to absorb and bind heavy metals. In this case the use of live phytoplankton will clean the water and lead to healthier corals and fish even if it is not used as a food source directly.

Live Phytoplankton will also remove nitrates and phosphates, consume carbon dioxide (stabilize pH), and oxygenate the water during the day part of the light cycle. Watch that your NO3 and P04 levels don't drop too quickly when dosing. It's a good idea to get these levels above 0 before dosing and don't dose too much.

Conservative advice is to start off with the addition of a minimal dose once per week and build up to several times per week. The gradual increase in feeding phytoplankton gives your system time to adjust to the phyto's presence. Remember to go SLOW AND STEADY with any changes in your system.

It is hard to say definitively that one should add a set amount to a set water volume. Trying to mimic nature with the exact amount of phytoplankton found in nature is not practical from a cost standpoint. The dose amount you decide upon will vary based on which organisms are in the tank, how many organisms are in the tank, the aquatic environment you are trying to emulate, skimming, water changes, etc.




Live Phytoplankton needs to be stored in the fridge, and make sure to give it a good mix up daily even if not dosing any.

There are many places to purchase phytoplankton however generally the darker colour the higher concentration (this is what we're looking for) If you're located within the UK a company called Reef Boost has offered our users a 10% discount on all their products, so if you're looking for a high quality Phytoplankton give them a try. (Below prices will of course be subject to change) check out the post regarding this within the pages announcements section.

If you're interested in culturing your own Phytoplankton, Reef Boost sells the required kits along with all the information you'll need to get you going.

We are also pleased to announce that we are now sponsored by Algae barn, you will be able to get 15% off on their site by using discount code **MACKSREEF15**, this offer is open to both US and international members. However please note international delivery costs will apply



	Description	Sizes	Direct Price
	Nanno Uno Freshly harvested Nannochloropsis phytoplankton. A smaller cell size and contains substantial amounts of the omega-3 fatty acid and high levels of polyunsaturated fatty acids. Very high lipid levels, and is ideal for feeding corals & culturing rotifers	275ml	£6
		500ml	£9
		1500ml	£20
	Tetra Uno Freshly harvested Tetraselmis Phytoplankton. A larger motile cell and contains substantial amounts of the omega-3 fatty acid and high levels of polyunsaturated fatty acids. Very high lipid levels and is ideal for feeding corals & culturing copepods	275ml	£6
		500ml	£9
		1500ml	£20
	Phyto Trio Blend of Nannochloropsis, Tetraselmis and Chlorella. The best of all the phytoplankton species in one bottle. Chlorella is very high in proteins and compliments the omega-3 and polyunsaturated fatty acids of the nannochloropsis & tetraselmis	275ml	£6
		500ml	£9
		1500ml	£20

13.0 Dosing Copepods

There is never a bad time to seed your reef with pods; however, the best time to seed is when the nitrogen cycle has stabilized in a newly set up system. At this time, nitrate build-ups have very likely resulted in the growth of undesirable algae. Algae provides a great food source for copepods (e.g. Tigriopus and Tisbe). These unsightly algal growths will decline as the pod population grows. The pod population size will stabilize after nitrate levels (and thus the algal growth rate) have levelled off.

It should be noted that Tigriopus copepods are not known for eating dinos, but they will help you outcompete them, so it's definitely worth adding them into your tank. They will only have positive effects on your reef's ecosystem. Tisbe pods is another discussion. These have been seen, through a

microscope, eating dinos; however, in certain parts of the world (UK & Europe), these can be difficult and expensive to get hold of. If you can, it's worth adding these to your system also.

There is a process to adding these into your system, which is explained below:

If you order a few bags and you're not going to use them on the day you get home, then store these in the fridge. They should be okay in there for a few days.

Like all marine creatures, we need to make sure we temperature acclimate them to our tank's water temperature. If they are removed from the fridge and just added to the tank, chances are they will mostly die due to temperature shock. Float them within the sealed container in either your sump or in the main display for around 30 minutes before they're added into the display.

The temperatures of the tank water and copepod container now match. The best time to add copepods into the tank is going to be after the main display lights have been off for 1-2 hours. If they're added in the middle of the day, expect your fish to go into a feeding frenzy. After the lights have been off for a couple of hours, the fish go into a kind of sleep / zombie mode, so the majority of what you add will survive.

As a general rule, you shouldn't add any water into your aquarium that has come from another tank as it could have anything in there, so the next step is going to be to use a copepod sieve to take the copepods out of the bag they came in and disregard the bag water. Before doing this, have a small amount of tank water in a small plastic container.

To give the copepods the best chance of survival, do the following when adding them to the system:

Ensure as above lights have been off for 1-2 hours

Just prior to adding, turn all flow off in the tank (return and wavemakers)

Use a long coral feeder to remove the copepods from the container and squirt them into the rock work and sand bed. This gives them the best chance of hiding away and eventually repopulating in the system.

Leave the return pump and wavemakers off for 30 mins after adding the copepods


From experience of adding a fair few of these, also leave the skimmer and UV off and filter socks out overnight. Once the flow goes back on, a lot of what's been added could end up in the filter socks or sump the next morning.

After 30 mins, turn all the flow back on and then get yourself off to bed 😊.

Just remember to TURN YOUR FLOW BACK ON.

Reef Boost has offered our UK members a 10% discount on their products. Below is a package of copepods and rotifers (Below prices will of course be subject to change). Check out the post regarding this within the pages announcements section. Algae Barn also offers 15% off using code MACKSREEF15.

If you're interested in culturing your own copepods or rotifers, reef boost also sells packs that enable you to start these, the pack will also include all the information you need to get you going.

	Mandarin Mix	275ml	£9	
	Freshly harvested Copepods & Rotifers. There are adult male and female copepods along with juveniles making this an excellent starter culture or an essential feed for Mandarins, Copperbands and other fussy eaters	500ml	£13	

14.0 Live Rock vs Artificial Rock / Dry Rock

I'm sure all reefers have read many, many posts / articles about the benefits of using artificial rock/dry (dead) rock vs using matured live rock. The main benefit of starting your tank off with artificial rock / dry rock is that no pests are present within the system on day one. This, for reefers of all experience levels, in theory, is a huge benefit since battling crabs / fire worms / aiptasia can be painful. But the question is: Is it as painful as battling dinos for 6 months? With every positive there are of course negatives. Live rock is literally teeming with life, including matured bacteria and also lots and lots of microbiology.

One of the main issues with not starting a system off using live rock is that you're pretty much starting your tank off with 0 bacteria and 0 microfauna in your system. To build these and fully establish them in your tank takes time. Always remember that nothing good happens fast in a reef tank.

Yes, we can add bacteria such as ATM Colony early on for the nitrification cycle, but don't be fooled. This is only the first stage of cycling a reef tank. So when we start adding large amounts of fish / corals quickly (within a month of getting the tank wet) along with equipment (skimmer, phosphate removers, NO-POX etc.) to remove excess nutrients, we see massive swings in nitrates and phosphate levels in new tanks because the system is not yet stable. More often than not, this results in us bottoming out nitrates and phosphates.

Also, you will see many videos about maintaining super low nutrients on tanks and dosing things such as vibrant as a prevention of the ugly stage, etc. Just leave the tank alone to do its thing. Getting green hair algae in a new reef tank is completely normal.

Another battle that many people face is trying to maintain the magic 3ppm nitrate and 0.03ppm phosphates levels in early reef systems, which can be extremely difficult and will require testing these levels almost daily. You're also giving yourself no margin for movement. If there is any slight swing, then, boom, you've hit 0. Our advice: Give yourself some flexibility and target these a little higher, especially over the first 12 months of the life of your reef.

The key here is stability and not overloading your tank with fish and corals too soon and too quickly. Slow and steady. "Nothing good happens fast in a reef tank". If we do this too soon and too quickly before your system has matured enough to be able to deal with the large bioloads naturally without excess equipment to strip nutrients out the water, then chances are you are going to encounter issues with constant swings in levels.

My advice would be to allow your tank to cycle slowly early on and to seed your system early on with coralline algae. When you start seeing these spots in your tank, then your system is ready to support additional life (corals). Yes, we all want to have these established reefs full of corals early on. In reality, having tanks like the ones you see in shops and online literally takes years to establish.

Using artificial rock / dry rock is beneficial, but we need to make sure we are allowing our tanks and our rockwork to mature enough. This will take longer than if using actual live rock.

15.0 UV, Placement & Flow Rates

For the types of dinos that go into the water column at night (Osteoporosis and Coolia), the best and quickest way to deal with them is to install a high quality, oversized UV as per the following guidelines:

The recommended UV size is a minimum of 1 watt per 3 gallons / 12 litres. The higher the wattage the better. This is essential to ensure maximum contact time for any water that passes through the UV. We would not recommend Green Killing Machine UV units as these have high pre-set flow rates. People appear to get poor to no results from using them. A high quality UV, such as D-D are great. If you are in the United States, Jebao UVs are very well priced and work well for dinos.

Flow through the UV should be very slow. The general rule of thumb is 1 to 3x gph/lph for the tank's volume. This is usually about 65-100gph (250-400lph) on smaller tanks or 90-200gph (350-750lph) on bigger tanks (Pathogen flow rate).

UV should be temporarily set up above your tank / at the side of your tank, pulling and returning water from your display. Run at least 12 hrs during lights out (can be run 24/7, just remember to turn off for an hour when dosing phytoplankton). The UV intake pump should be located as close to the sand bed as possible. Running the UV in the sump, in our experience, is nowhere near as effective. You can also run multiple UV's connected together if you have a large system.

UV should be turned off for an hour after dosing phytoplankton / copepods / bacteria because the UV will zap anything that goes through it.

It is not recommended to use UV for treating Large / Small-cell or Prorocentrum as per what we have discussed so far. They don't enter the water column at night. The treatment we advise is to dose waterglas. Dosing this in conjunction with a running UV is thought to impact the density of the diatom population. Anything that goes through the UV at the above flow rates is going to get sterilised.

Once the Ostreopsis / Coolia have cleared and can no longer be seen visually and under the microscope, run the UV for a further 2 weeks. Then it should be okay to remove.

Running UV continually within a reef system for no specific reason can and will impact on bacteria within the system that lives within the water column. See below for further information on this:

<https://aquabiomics.com/faq/how-does-a-uv-sterilizer-affect-the-microbiome>



16.0 Dosing Waterglass / Seahorse Breeder Silicates

We recommend dosing waterglass to initiate a diatom bloom for certain types of dinos. Other silicate options can be very expensive in the long run, such as dosing Brightwell's SpongExcel (it generally takes a large volume to hit the 2-3ppm sweet spot).

- Recommend 36 - 41% liquid sodium silicate (Waterglass)
 - For the above concentration, we recommend dosing 0.1mL per 15 gallons (55 liters) of tank volume for 1ppm of silicate.
 - Aim for 2-3ppm.
 - For example, on a tank that's 60 gallons:
 - $60 \text{ gallons} / 15 \text{ gallons} = 4$
 - $4 \times 0.1\text{mL} = 0.4\text{mL}$ - This gives you the dosage to get to 1ppm silicate
 - $0.4\text{mL} \times 2 = 0.8\text{mL}$ – this amount should give you 2ppm silicate

Do not directly dose waterglass into the aquarium as it generally just turns into a solid. It should be mixed in with around 250ml of RO water and given a good shake, then poured slowly into a high flow area (return pump area / wave maker).

Some precipitation from silicate dosing is normal. It is magnesium being precipitated out. It should all almost completely dissolve back eventually and does not typically affect your magnesium any noticeable amount.

Test kits are not usually reliable when it comes to SI, especially salifert; however, Colombo's SI test kit seems to be reliable.

Test and once you hit the 2-3ppm sweet spot, stop dosing and only then re-dose once the level falls below the above. Silicate is used up very rapidly and most people will need to dose daily, especially at the beginning.

Although 2-3ppm is the target, in our experience and others there is no effect on livestock in the tank when levels have been accidentally dosed and maintained significantly higher (we have seen 16ppm and higher)

It should be noted that while dosing waterglass / silicates, a decrease in alkalinity uptake can occur. We recommend regular testing and adjustment of dosing in relation to alkalinity, calcium and magnesium. To start, you should be testing these daily to catch any change in levels.

We are also currently exploring adding a mix of silicates into systems to see if this is more effective at out-competing the dinos e.g. waterglass, seahorse breeder and brightwells sponcExcel, the thought process here is that this should input a mix of diatoms into your system therefore accelerating the diatoms outcompeting the dinos, I tested this method personally using waterglas sand seahorse breeder silicates (only available in UK / Europe) and saw a much quicker and diverse diatom bloom.

When using waterglass, keep a keen eye on your alkalinity levels as waterglas contains sodium oxide, which when added to water becomes sodium hydroxide and this then reacts with CO₂ to form sodium hydrogen carbonate (sodium bicarbonate) which could / will increase alkalinity. So keep an eye on this and adjust your dosing to your target alkalinity. Be consistent with the timing between dosing silicate and testing alkalinity. Failing to do that can make your alkalinity levels appear falsely unstable

17.0 Hydrogen Peroxide (H₂O₂ Dosing)

Dosing hydrogen peroxide (H₂O₂) can help. In small amounts, it is generally safe to dose 3% H₂O₂ @ 1ml per 10gal/ 37 litres every 24 hours, just make sure it's food safe and you should be good to go. You can get a higher % h₂O₂ you will just need to adjust dosing to suit, there are a couple of examples below:

- 3% h₂O₂ – 48 gallons / 10 gallons * 1ml = 4.8ml
- 6% h₂O₂ – 48 gallons / 10 gallons * 0.5ml = 2.4ml
- 12% h₂O₂ – 48 gallons / 10 gallons * 0.33ml = 1.58ml

Dosing h₂O₂ can be very beneficial for your aquarium in terms of keeping algae at bay and with regards to gas exchange. It can be dosed by broadcasting (dose into a high flow area) or spot treating onto problem areas (make sure all flow is turned off)

We recommended using H₂O₂ at a strength of 3% that is **food-grade**. Dose this into a high-flow area within your system (directly into wave maker / return pump area). It is also recommended that you dose some nitrifying bacteria on a weekly basis while dosing H₂O₂.

12% food grade H₂O₂ can be used; however, the dosing amounts mentioned would need to be divided by four for the correct amount.

While dosing H₂O₂ is overall safe for livestock Lysmata shrimp (cleaners, fire, and peppermint) are more sensitive to it. While many people experience no ill effect to their shrimp when dosing the recommended amount, it is possible that it could harm those particular shrimp.

We also advise to dose H₂O₂ after the lights have been off for an hour or so as again it has been known on occasion to irritate anemones and other corals. So in our experience it is best to dose into a high flow area (return pump chamber) an hour after the lights have been off as the majority of corals will have closed up by then.

H₂O₂ broadcast dosing as per the above could be counterproductive while dosing waterglas as it will impact on the dinos but also the diatom populations

If there is just a patch of dinos in one area, a small amount can be dosed directly onto this area with all flow in the tank turned off. Watch it bubble away, just don't dose more than the above recommended about every 24hrs.

18.0 Cleaning of the Rockwork / Sandbed

18.1 Cleaning of the Sandbed

Another good method of removing a large amount of dinos quickly from the system is to syphon them off the sand bed. Generally (in the UK) we would recommend a product called Aqua-one Vac-A-Tank gravel cleaner. In the U.S. the Pro-Clean Gravel Wash made by Python is a good alternative. These products tumble the sand and remove very little from the system. A standard cleaner can be used but expect large amounts of sand to also be removed also

As we don't want to be removing large volumes of water from the system (if your levels are already super low), we recommend placing a filter sock into your sump and basically re-circulating the water around the system instead of removing large amounts of water. The filter sock will remove the dinos and any rubbish in the sand.

Recommend 5 -10 micron-sized filter socks

Dinos range from 13- 85 microns hence the 5-10 micron filter sock.

Anything larger than 5 to 10 micron filter socks will just allow the dinos to recirculate in your system, and we don't want to do that.

Make sure you clip the tube coming from the sand vac into the filter sock so it doesn't unexpectedly flick out of the sock and spray water everywhere (yes, I learned that the hard way).



18.2 Cleaning of the Rockwork

Depending on the type of dinos you have and if they are on the rockwork too, you should use a type of baster (turkey baster) to give your rockwork a good blast every night to make sure they are removed from the rockwork and enter the water column so they can either be removed by your filtration or go through the UV and get zapped by that. As part of your weekly maintenance, you should give your rockwork a good blast just to make sure any detritus doesn't build up within the rockwork because it will cause issues further down the line when it is eventually released into the water column. If you are seeing large amounts of waste build-up in your rockwork, then this would, no doubt, be an issue caused by lack of flow within your tank so you may need to look at adding a wave maker or two or turning up the ones you already have in your tank.

19.0 Blackouts

So do blackouts actually work, in our experience the answer to this is no and we don't recommend them especially if you have SPS within your system as this can really stress them out and cause bleaching. There is evidence out there that suggests that long blackout (7-9 weeks) can cause certain strains of dinos to disappear completely, this isn't really applicable for most of us as we have corals within our systems, a blackout duration like this would cause extreme stress and most likely death of all corals within the system not to mention the adverse effect on the tanks micro-biology.

However, generally most reefers will look at 3 day blackouts. The tricky thing with short blackouts and dinos is this can force them into protocyst (type of hibernation) and they can then lie dormant for weeks or even months, just waiting for the right conditions to return. So initially it will look like they have cleared but in reality they will be back in a few days when light hits the system again, which is why generally unless the underlying issues are resolved then they will come back generally with a bang the second time around.

20.0 Dino-X Dosing

This method can be very harsh on corals, we generally don't recommend this as our methods described above do work, the advice throughout this document is about slow and steady approaches to allow for the balance to be slowly corrected in favour of the good micro-biology. Dino-X will cause a sudden die off of the dinos with nothing there to take their place so in the majority of cases the dinos return.

DinoX can be used as a last resort, however we would advise that any corals can be temporarily moved into another system then this should be completed as a precaution, some people see zero losses but sadly others see significant losses. It should be noted that DinoX does not work on all types of dinos, for many people who have used this method initially the dinos appear to have cleared only for them to return a couple of weeks later.

If you are going to use DinoX please following the instructions carefully they can be found here

https://www.faunamarin.de/wp-content/uploads/2021/04/FM_HTU_DINO_X_NEU_Dinoflagellaten_EN_220421.pdf

21.0 Completing Water Changes

Okay so with water changes the general consensus is don't do them if dinos are dominant with the system as the dinos will thrive when new water is added into the system.

What we recommend is only do water changes if your no3 / po4 levels are too high, you use water changes to keep Alk, cal and mag in check or based on ICP results / advice due to pollutants being present in the system.

If water changes are required we would recommend using a high quality salt mix that does not contain high levels of iron, one of our team recently had an ICP completed based on a clean salt mix using Tropic Marin pro, the snapshot below shows the results elevated levels of iron, manganese, Lithium Barium, it is believed it's the high iron content within fresh salt water mixes causes the dino population to increase.

We also recommended that within a 24hr period only 10% - 15% water changes are completed. If you need to do more then spread them out over a few days. The elevated levels in tropic marin pro detailed above and below if completed on 10% water changes won't cause a major swing in levels and have an impact on your tanks corals, however complete a 50% water change in one setting then

it could cause a big swing in the above levels, corals, inverts, micro-biology wont react well to a sudden swing in parameters including trace elements.

We would recommend currently doing water changes using Red Sea's blue bucket salt as the general consensus is this doesn't have high iron levels. The below link is to a post on Reef2Reef where Jason2459 has put together a number of tests based on fresh salt mixes and posted the relevant ICP results of these:

<https://www.reef2reef.com/threads/saltmix-parameters-bring-on-the-test-results.233233/>

Trace Element	ICP Reading	ATI Baseline Level	Difference
Lithium	184.4 µg/l	165.0 µg/l	+19.42 µg/l
Silicon	81.63 µg/l	97.03 µg/l	-15.40 µg/l
Iodine	44.57 µg/l	63.07 µg/l	-18.50 µg/l
Barium	21.97 µg/l	9.70 µg/l	+12.27 µg/l
Molybdenum	7.78 µg/l	11.64 µg/l	-3.86 µg/l
Nickel	u.	0.49 µg/l	-0.49 µg/l
Manganese	180.1 µg/l	0.97 µg/l	+179.1 µg/l
Arsenic	u.	1.46 µg/l	-1.46 µg/l
Beryllium	u.	0.10 µg/l	-0.10 µg/l
Chrome	0.28 µg/l	0.49 µg/l	-0.21 µg/l
Cobalt	u.	0.10 µg/l	-0.10 µg/l
Iron	20.89 µg/l	0.49 µg/l	+20.40 µg/l
Copper	u.	0.49 µg/l	-0.49 µg/l
Selenium	u.	0.49 µg/l	-0.49 µg/l
Silver	u.	0.10 µg/l	-0.10 µg/l
Vanadium	1.03 µg/l	1.46 µg/l	-0.43 µg/l
Zinc	1.25 µg/l	1.94 µg/l	-0.69 µg/l

22.0 Removal of the Sand Bed

A possible option (shouldn't be the first option) for aiding in removal of dinos from the system is to progressively remove the substrate / sand bed from the tank, however this option can simply force specific types of dinos onto the rockwork as opposed to the sandbed. We understand the frustration with some types of dinos staying dominant in systems in some take for weeks or even months. We would advise to use this option as a last resort as the sand in your system houses a lot of the good bacteria and microbiology. Remove the sand and you're removing their home. Stick with our methods; they DO WORK. It just takes time. Allow for things to happen naturally and over time. Nothing good happens fast in a reef system.

Either way correct the underlying issues in your system – lack of bacteria, Low / depleted No3 / Po4, high / low / imbalance in trace elements, lack of micro-biology or removing the sand bed wont make any difference the dinos will remain dominant but just find another surface to dominate.

As an Alternative option the sand can be removed from the tank in sections and treated in hydrogen peroxide then rinsed in RODI water and returned into the tank, target a section of the tank each day the sand will need to be treated at a higher concentration of H2O2 per litre than explained within section 17.

23.0 Future updates / Areas of further exploration

- Raising temperature – metabolic reaction generally not proven to work.
- Adding clean up crew - This is not advised as a solution to dealing with dinos not with Prorocentrum or osteoporosis anyway, the main issue here is the toxins that are released by the dinos once eaten, this will result in the death of majority of clean up crew that each any alage with dinos in it. Adding a sand sifting goby again is not advised as it will most likely suffer the same fate as the clean up crew. When treating large cell, additional clean up crew can be added as this type is far less toxic than others.
- Vibrant dosing – can strip your system of Nitrates and Phosphates quickly, dosing vibrant is generally the cause of a lot of people bottoming out their NO3 and PO4 and opening the door for dinos.
- Bubble scrubbing – can be productive if you have Ostreopsis or coolia, generally best completed after the lights have been out a few hours and the dinos have entered the water column.
- Raising PH / methods of keeping PH stable – Only positive benefits will be seen in a reef system by keeping your PH stable and even more positives can be seen if you can hit the magic 8.3 to 8.5 number and keep it stable. Drawing fresh outside air into your skimmer can help, or attaching a CO2 scrubber onto your skimmers air-intake as this will remove the CO2 from the air before it goes into the skimmer. More surface agitation etc etc
- Water changes – water changes using salt with high iron content thought to cause issues.
- Feeding – adding iron via feeding Mysis shrimp?
- Further detail on trace element / pollutant corrections
- Why do we tend to get Cyano during treatments – While trying to get your nutrients up it can be a bit of a balancing act but over time using the methods detailed above it will enable you to stabilise them, you will get cyano in your reef tank if your nitrates and phosphates are out of balance e.g. nitrates 25ppm Phosphates 0.03ppm, the good news is the cyano will help outcompete the dinos so don't be too quick to dose products such as chemiclean to clear them quickly as you could just be giving the dinos the space to re-colonise in. Our advice would be to increase flow via wavemakers, get your no3 and po4 back in balance as we have described within section 9.0 and even syphon it out using the method in section 18.1 and the cyano should go away on its own. If it persists and starts impacting on corals then it may be time to resort to chemicals to clear.